

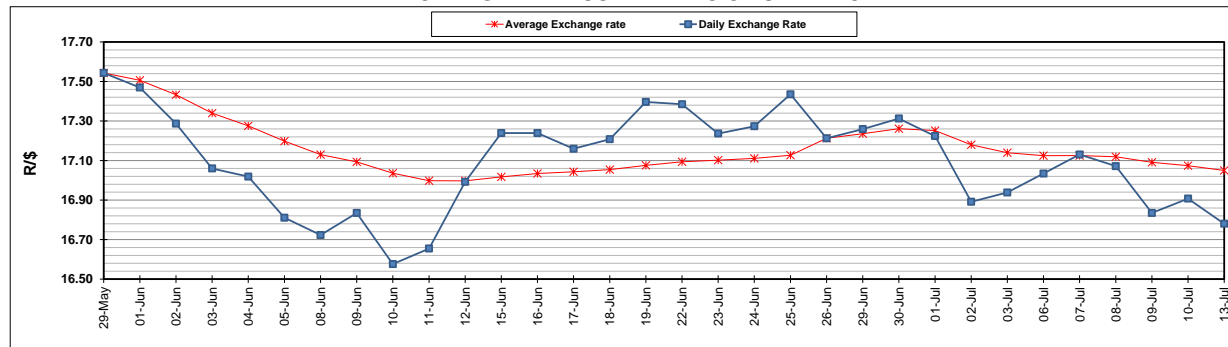
	PETROL 95 ULP	PETROL 93 ULP & LRP	DIESEL 0.05%	DIESEL 0.005%	ILL. PAR.
GAUTENG PUMP PRICE (SA c/l) AS FROM 01/07/2020	1,512.000	1,483.000	-	-	-
WHOLESALE PRICE (SA c/l) AS FROM 01/07/2020	-	-	1,303.560	1,307.960	703.828
SINGLE NATIONAL MAXIMUM RETAIL PRICE	-	-	-	-	882.000
BASIC FUEL PRICE - 13/07/2020 (SA c/l)	554.466	540.780	576.932	582.176	512.722
PRESS RELEASE CONTRIBUTION TO BFP 01/07/2020 - 13/07/2020 (SA c/l)	564.770	545.770	552.630	557.030	499.128
UNIT OVER/(UNDER) RECOVERY - 13/07/2020 (SA c/l)	10.304	4.990	(24.302)	(25.146)	(13.594)
AVERAGE BASIC FUEL PRICE 26/06/2020 - 13/07/2020	559.899	543.860	581.741	586.014	513.236
AVERAGE UNIT OVER/(UNDER) RECOVERY 26/06/2020 - 13/07/2020	(38.129)	(38.840)	(72.361)	(71.234)	(67.608)

### ANALYSIS MOVEMENT OF AVERAGE OVER/(UNDER) RECOVERY

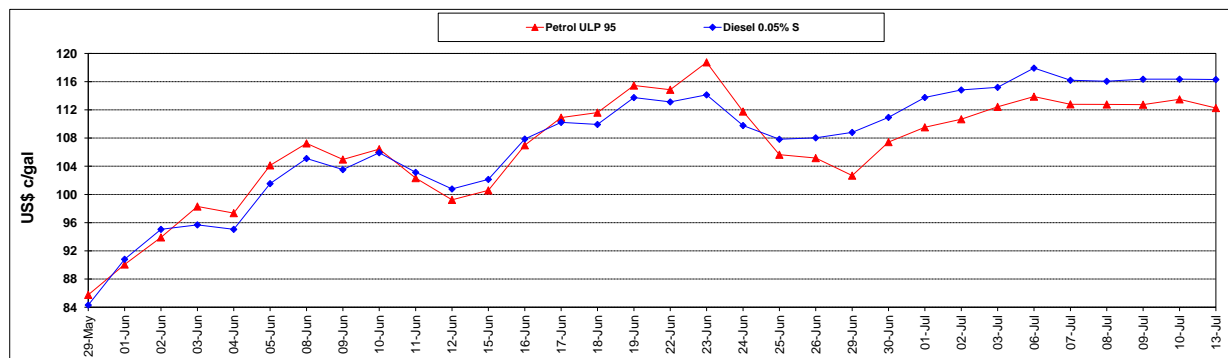
	PETROL 95	PETROL 93	DIESEL 0.05%	DIESEL 0.005%	ILL. PAR.
- MOVEMENT IN INTERNATIONAL PRODUCT PRICES	(40.671)	(41.309)	(75.002)	(73.894)	(69.938)
- MOVEMENT IN EXCHANGE RATE	2.542	2.469	2.641	2.660	2.330
AVERAGE UNIT OVER/(UNDER) RECOVERY 26/06/2020 - 13/07/2020	(38.129)	(38.840)	(72.361)	(71.234)	(67.608)

### R/\$ EXCHANGE RATE - (R/\$16.7800 - 13/07/2020)

#### EXCHANGE RATE USED IN BASIC FUEL PRICE



#### INTERNATIONAL PRODUCT PRICES OF BASKET USED IN BASIC FUEL PRICE



#### BASIC FUEL PRICE IN SA CENTS PER LITRE

